



COMUNE DI FAENZA
 Servizio Urbanistico
 Servizio Infrastrutture

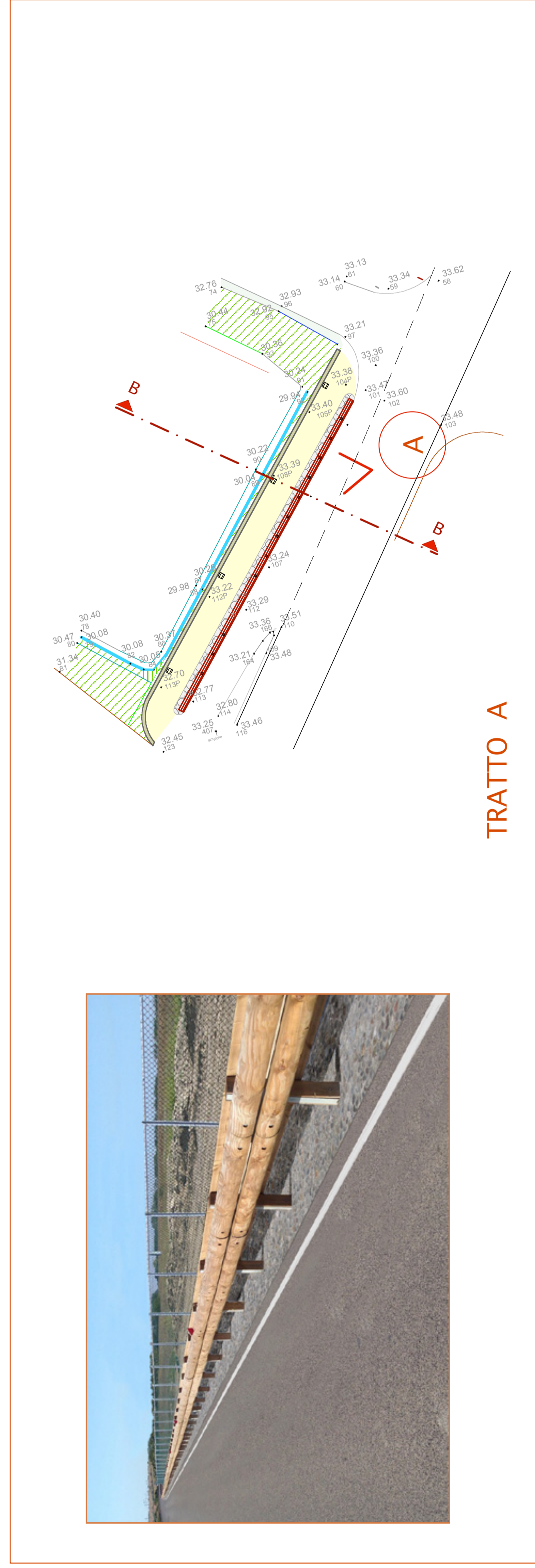
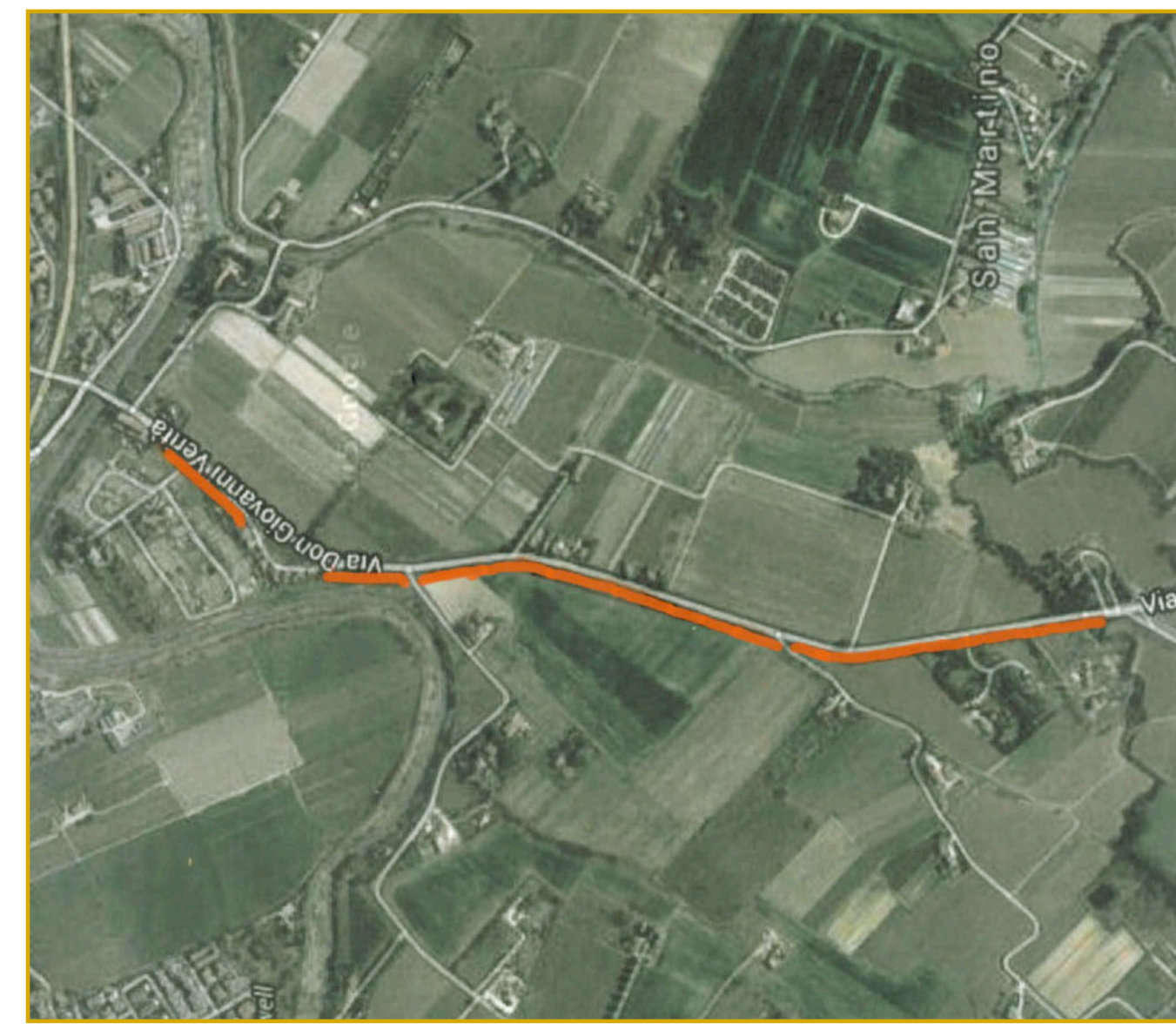
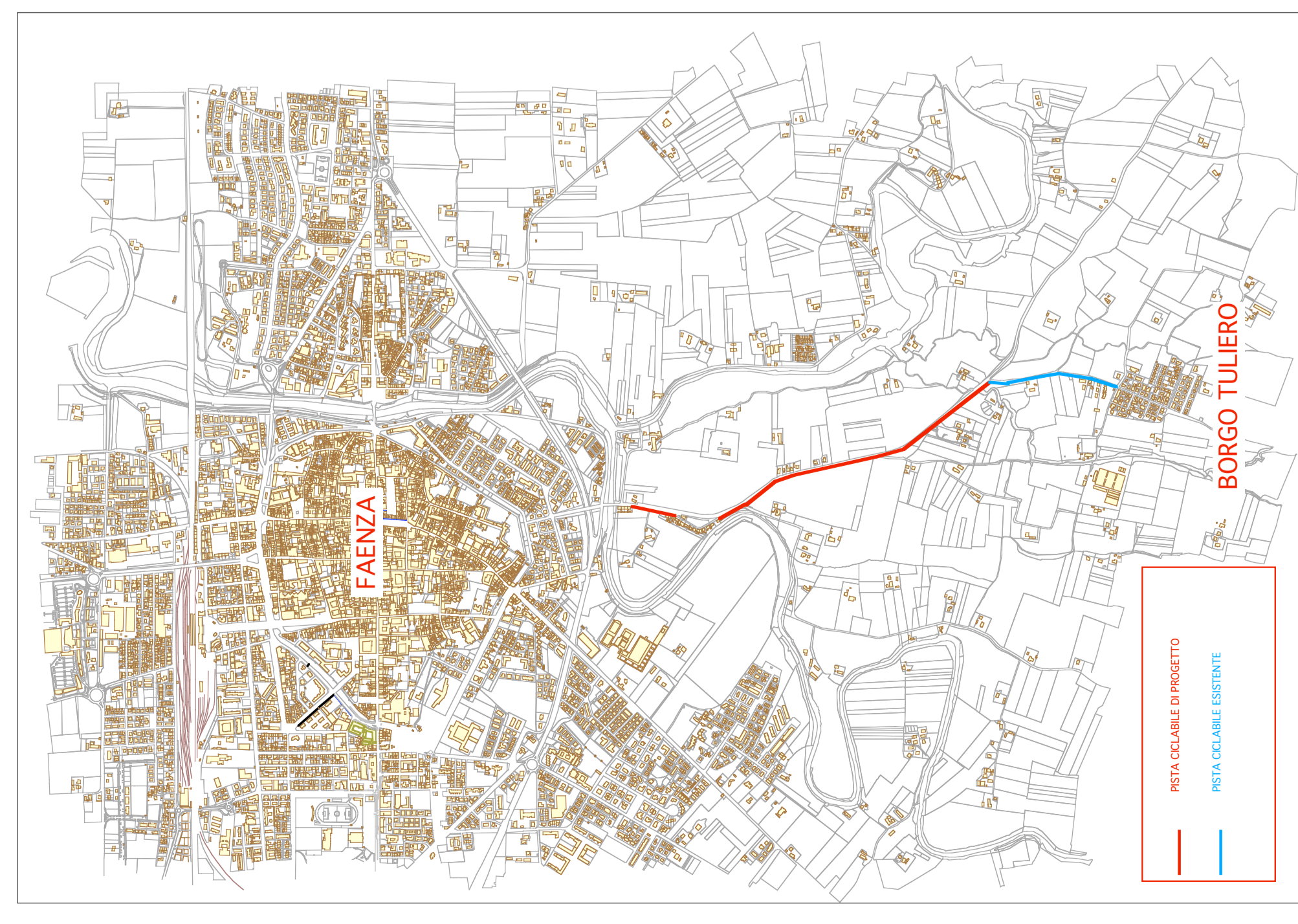
Adeguamento e messa in sicurezza Strada Provinciale n.16
 e realizzazione pista ciclopeditonale Faenza - Borgo Tullero

PROGETTO ESECUTIVO

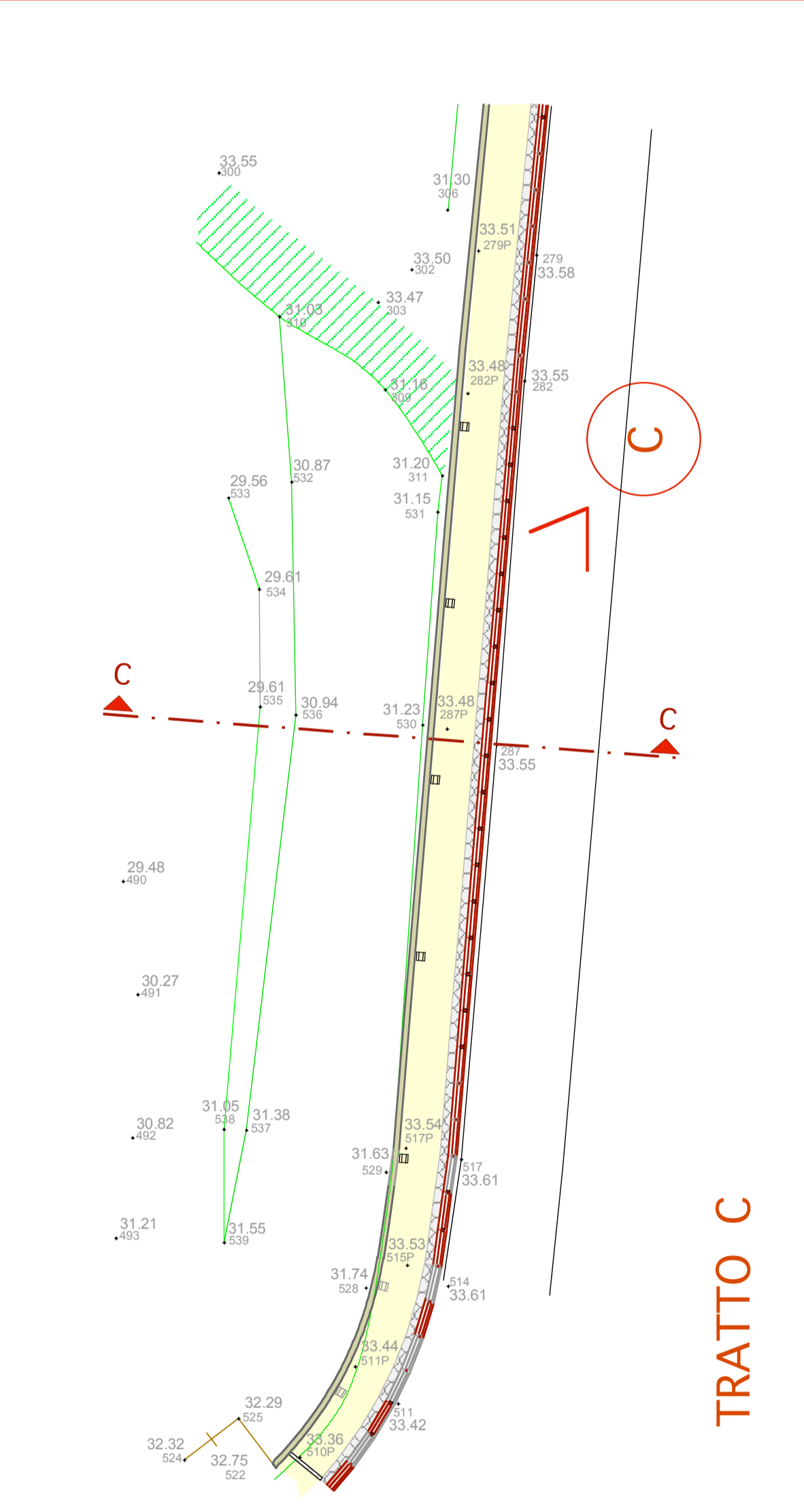
PROGETTO - ELABORAZIONI FOTOGRAFICHE

TAVOLA: 11
 OTTOBRE 2017

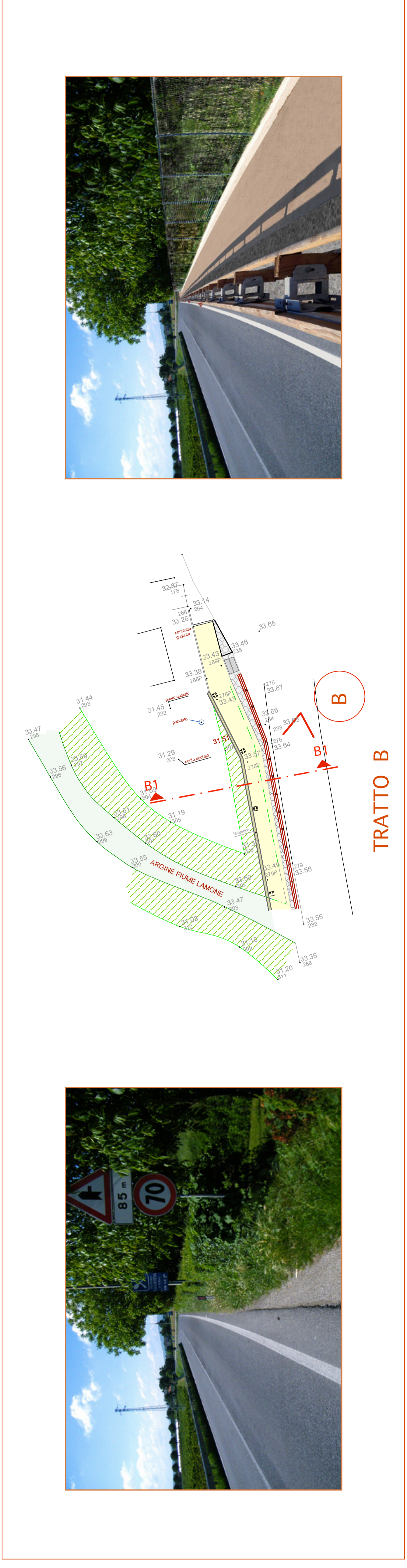
COLLABORATORI ALLA PROGETTAZIONE
 Geom. Emilio Sestini
 Arch. Eleonora Visani
 Geom. Roberto Lambertini



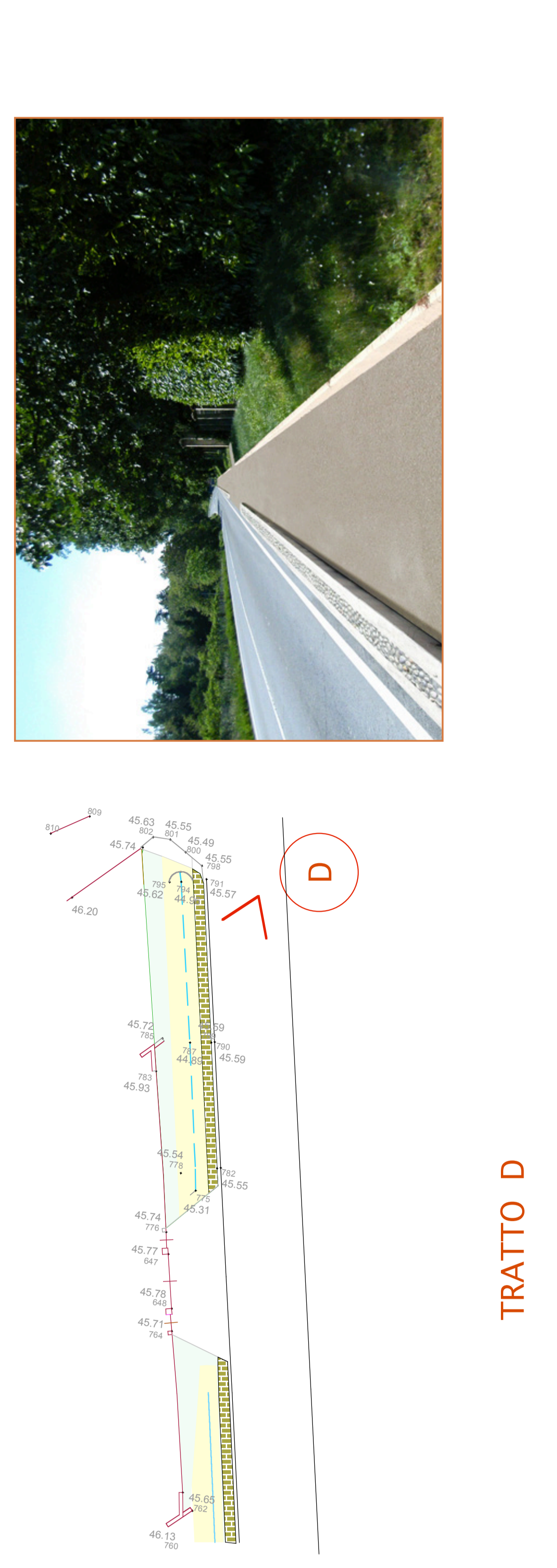
TRATTO A



TRATTO C



TRATTO B



TRATTO D

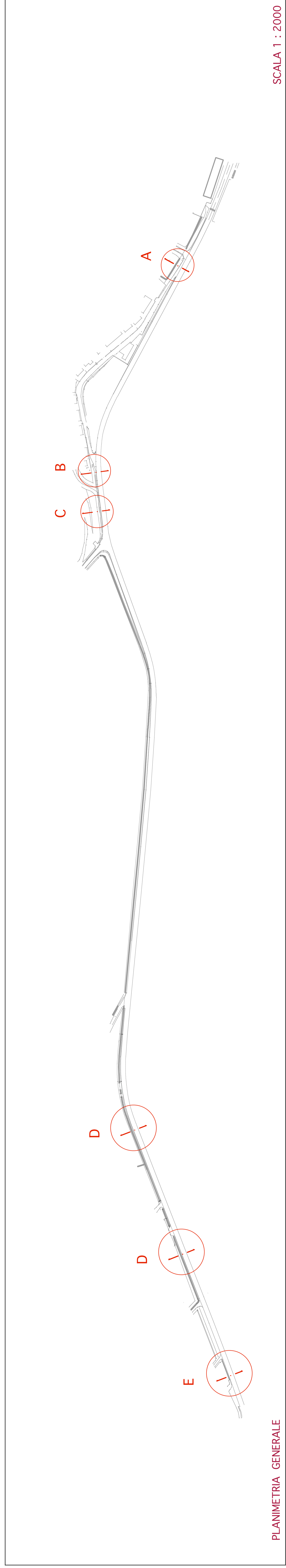


TRATTO E



E 1

E 2



PLANIMETRIA GENERALE

SCALA 1 : 2000